

Wind Symphony Audition

♩ = 72

D Major Scale



G Major Scale



C Major Scale



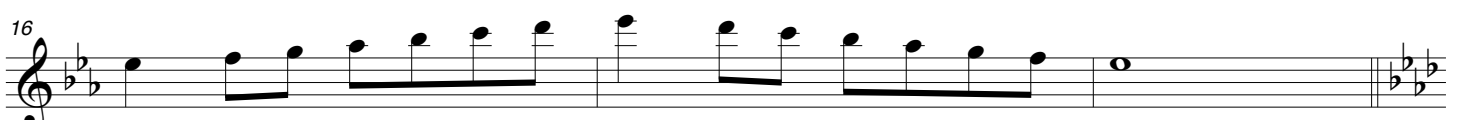
F Major Scale



Bb Major Scale



Eb Major Scale



Ab Major Scale



Db Major Scale



Gb Major Scale



Wind Symphony Audition

Scale Pattern #1 in Ab

28

Musical notation for Scale Pattern #1 in Ab, measures 28-32. The key signature has two flats (Ab). The scale is written in a single line of music, starting on G4 and ascending to G5.

33

Musical notation for Scale Pattern #1 in Ab, measures 33-37. The scale is written in a single line of music, starting on G4 and descending to G3.

Scale Pattern #1 in Db

38

Musical notation for Scale Pattern #1 in Db, measures 38-42. The key signature has three flats (Db). The scale is written in a single line of music, starting on F4 and ascending to F5.

43

Musical notation for Scale Pattern #1 in Db, measures 43-47. The scale is written in a single line of music, starting on F4 and descending to F3.

Chord Study #1 in Bb

48

Musical notation for Chord Study #1 in Bb, measures 48-53. The key signature has two flats (Bb). The study consists of eighth-note chords moving in a stepwise fashion across two octaves.

Chord Study #1 in Eb

54

Musical notation for Chord Study #1 in Eb, measures 54-59. The key signature has three flats (Eb). The study consists of eighth-note chords moving in a stepwise fashion across two octaves.

2 Octave Scale

60

Musical notation for 2 Octave Scale, measures 60-65. The key signature has two flats (Bb). The scale is written in a single line of music, starting on G4 and ascending to G5.

Goldenrod Lullabye

The image displays a musical score for a solo instrument, likely a flute or clarinet, in a key signature of one flat (B-flat major or D minor). The score is written on a single staff in treble clef. It begins at measure 65 and ends at measure 112. The music is characterized by long, flowing lines with many slurs and ties, suggesting a lullaby-like quality. There are two first and second endings at measures 82-83. The piece concludes with a *rit.* (ritardando) marking at measure 112.

This solo must be played WITH accompaniment. To find the accompaniment, go to the band website, www.vhbandrocks.com, click on the "Auditions" link on the right hand side. Links to the piano recordings will be on that page.

There are two recordings. One has the piano part AND the solo. The other has just the piano. The first is for your practice. The second is what to have playing while you record.

If you have any questions, please contact Mr. Lemen.