

Tuba

Wind Symphony Audition

♩ = 72

D Major Scale



G Major Scale



C Major Scale



F Major Scale



Bb Major Scale



Eb Major Scale



Ab Major Scale



Db Major Scale



Gb Major Scale



Wind Symphony Audition

Scale Pattern #1 in Ab

28

Musical notation for Scale Pattern #1 in Ab, measures 28-32. The notation is in bass clef with a key signature of three flats (Ab major). It consists of a single line of music with eighth notes ascending from G2 to G3.

33

Musical notation for Scale Pattern #1 in Ab, measures 33-37. The notation is in bass clef with a key signature of three flats. It consists of a single line of music with eighth notes descending from G3 to G2, ending with a double bar line and repeat sign.

Scale Pattern #1 in Db

38

Musical notation for Scale Pattern #1 in Db, measures 38-42. The notation is in bass clef with a key signature of four flats (Db major). It consists of a single line of music with eighth notes ascending from F2 to F3.

43

Musical notation for Scale Pattern #1 in Db, measures 43-47. The notation is in bass clef with a key signature of four flats. It consists of a single line of music with eighth notes descending from F3 to F2, ending with a double bar line and repeat sign.

Chord Study #1 in Bb

48

Musical notation for Chord Study #1 in Bb, measures 48-53. The notation is in bass clef with a key signature of two flats (Bb major). It consists of a single line of music with eighth notes ascending from G2 to G3, with rests in measures 48 and 49.

Chord Study #1 in Eb

54

Musical notation for Chord Study #1 in Eb, measures 54-59. The notation is in bass clef with a key signature of three flats (Eb major). It consists of a single line of music with eighth notes ascending from F2 to F3, with rests in measures 54 and 55.

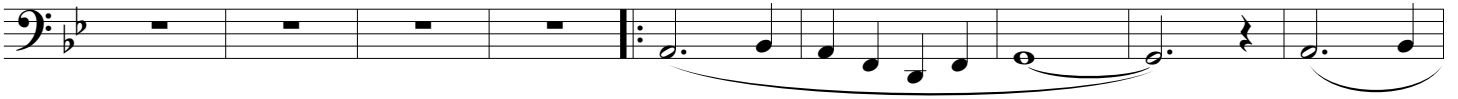
2 Octave Scale

60

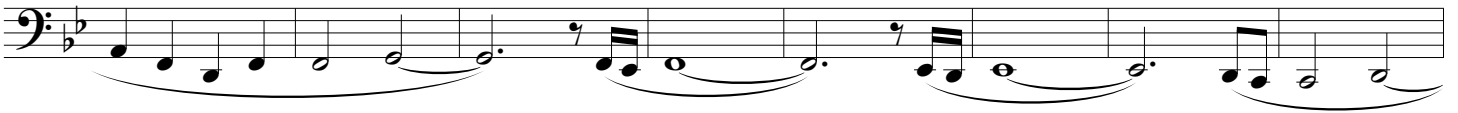
Musical notation for 2 Octave Scale, measures 60-65. The notation is in bass clef with a key signature of three flats. It consists of a single line of music with eighth notes ascending from G2 to G4, with rests in measures 60 and 61.

Goldenrod Lullabye

65



74



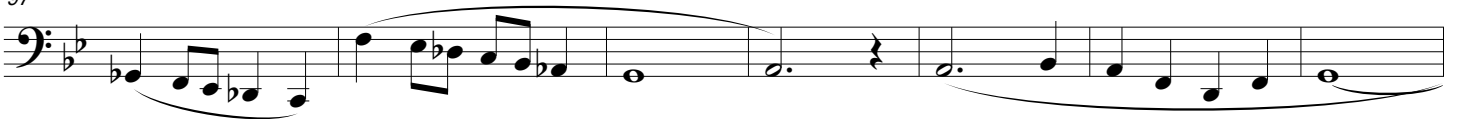
82



90



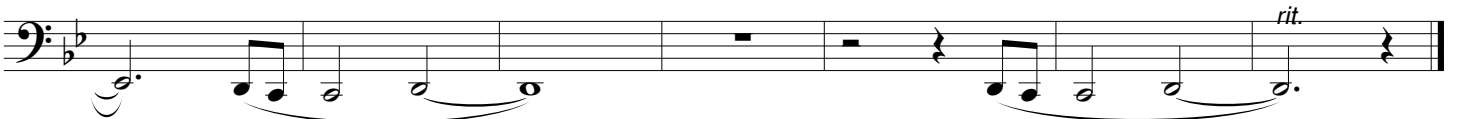
97



104



112



This solo must be played WITH accompaniment. To find the accompaniment, go to the band website, www.vhbandrocks.com, click on the "Auditions" link on the right hand side. Links to the piano recordings will be on that page.

There are two recordings. One has the piano part AND the solo. The other has just the piano. The first is for your practice. The second is what to have playing while you record.

If you have any questions, please contact Mr. Lemen.