

# Symphonic Band Audition

♩ = 100

C Scale

Musical staff for C Scale in bass clef, 4/4 time. The scale is written in a descending sequence: C4, B3, Bb3, A3, G3, F3, E3, D3, C3.

F Scale

5

Musical staff for F Scale in bass clef, 4/4 time. The scale is written in a descending sequence: F3, E3, D3, C3, B2, Bb2, A2, G2, F2.

Bb Scale

9

Musical staff for Bb Scale in bass clef, 4/4 time. The scale is written in a descending sequence: Bb2, Ab2, G2, F2, E2, D2, C2, B1, Ab1.

Eb Scale

13

Musical staff for Eb Scale in bass clef, 4/4 time. The scale is written in a descending sequence: Eb2, D2, C2, B1, Ab1, G1, F1, Eb1, D1.

Ab Scale

17

Musical staff for Ab Scale in bass clef, 4/4 time. The scale is written in a descending sequence: Ab1, G1, F1, Eb1, D1, C1, B0, Ab0, G0.

Db Scale

21

Musical staff for Db Scale in bass clef, 4/4 time. The scale is written in a descending sequence: Db1, C1, B0, Ab0, G0, F0, Eb0, Db0, C0.

Chromatic Scale

25

Musical staff for Chromatic Scale in bass clef, 4/4 time. The scale is written in a descending sequence: C0, B9, Bb9, A9, G9, F9, E9, D9, C9.

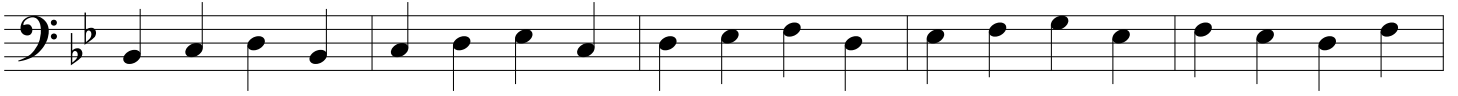
29

Musical staff for Chromatic Scale continuation in bass clef, 4/4 time. The scale is written in a descending sequence: B8, Bb8, A8, G8, F8, E8, D8, C8.

Symphonic Band Audition

Scale Pattern #1 in Bb

32

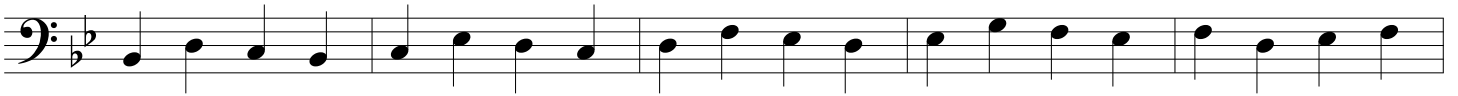


37



Scale Pattern #2 in Bb

42



47



Scale Pattern #1 in Eb

52



57



Scale Pattern #2 in Eb

62



67



Two Octave Scale

72



# Daydream

♩ = 100

77

*mp* *mf* *f* *mf* *rit.*

85

93

101

109

117

This solo must be played WITH accompaniment. To find the accompaniment, go to the band website, [www.vhbandrocks.com](http://www.vhbandrocks.com), click on the "Auditions" link on the right hand side. Links to the piano recordings will be on that page.

There are two recordings. One has the piano part AND the solo. The other has just the piano. The first is for your practice. The second is what to have playing while you record.

If you have any questions, please contact Mr. Lemen.