

Tuba

Symphonic Band Audition

♩ = 100

C Scale

Musical staff for the C Scale, starting at measure 1. The key signature has one flat (Bb) and the time signature is 4/4. The scale is written in bass clef and consists of quarter notes: C2, Bb1, Bb2, Bb3, Bb4, Bb5, Bb6, Bb7, Bb8, Bb9, Bb10, Bb11, Bb12, Bb13, Bb14, Bb15, Bb16, Bb17, Bb18, Bb19, Bb20, Bb21, Bb22, Bb23, Bb24, Bb25, Bb26, Bb27, Bb28, Bb29, Bb30, Bb31, Bb32, Bb33, Bb34, Bb35, Bb36, Bb37, Bb38, Bb39, Bb40, Bb41, Bb42, Bb43, Bb44, Bb45, Bb46, Bb47, Bb48, Bb49, Bb50, Bb51, Bb52, Bb53, Bb54, Bb55, Bb56, Bb57, Bb58, Bb59, Bb60, Bb61, Bb62, Bb63, Bb64, Bb65, Bb66, Bb67, Bb68, Bb69, Bb70, Bb71, Bb72, Bb73, Bb74, Bb75, Bb76, Bb77, Bb78, Bb79, Bb80, Bb81, Bb82, Bb83, Bb84, Bb85, Bb86, Bb87, Bb88, Bb89, Bb90, Bb91, Bb92, Bb93, Bb94, Bb95, Bb96, Bb97, Bb98, Bb99, Bb100.

F Scale

5

Musical staff for the F Scale, starting at measure 5. The key signature has two flats (Bb, Eb) and the time signature is 4/4. The scale is written in bass clef and consists of quarter notes: F2, Eb1, Eb2, Eb3, Eb4, Eb5, Eb6, Eb7, Eb8, Eb9, Eb10, Eb11, Eb12, Eb13, Eb14, Eb15, Eb16, Eb17, Eb18, Eb19, Eb20, Eb21, Eb22, Eb23, Eb24, Eb25, Eb26, Eb27, Eb28, Eb29, Eb30, Eb31, Eb32, Eb33, Eb34, Eb35, Eb36, Eb37, Eb38, Eb39, Eb40, Eb41, Eb42, Eb43, Eb44, Eb45, Eb46, Eb47, Eb48, Eb49, Eb50, Eb51, Eb52, Eb53, Eb54, Eb55, Eb56, Eb57, Eb58, Eb59, Eb60, Eb61, Eb62, Eb63, Eb64, Eb65, Eb66, Eb67, Eb68, Eb69, Eb70, Eb71, Eb72, Eb73, Eb74, Eb75, Eb76, Eb77, Eb78, Eb79, Eb80, Eb81, Eb82, Eb83, Eb84, Eb85, Eb86, Eb87, Eb88, Eb89, Eb90, Eb91, Eb92, Eb93, Eb94, Eb95, Eb96, Eb97, Eb98, Eb99, Eb100.

Bb Scale

9

Musical staff for the Bb Scale, starting at measure 9. The key signature has two flats (Bb, Eb) and the time signature is 4/4. The scale is written in bass clef and consists of quarter notes: Bb2, Bb1, Bb2, Bb3, Bb4, Bb5, Bb6, Bb7, Bb8, Bb9, Bb10, Bb11, Bb12, Bb13, Bb14, Bb15, Bb16, Bb17, Bb18, Bb19, Bb20, Bb21, Bb22, Bb23, Bb24, Bb25, Bb26, Bb27, Bb28, Bb29, Bb30, Bb31, Bb32, Bb33, Bb34, Bb35, Bb36, Bb37, Bb38, Bb39, Bb40, Bb41, Bb42, Bb43, Bb44, Bb45, Bb46, Bb47, Bb48, Bb49, Bb50, Bb51, Bb52, Bb53, Bb54, Bb55, Bb56, Bb57, Bb58, Bb59, Bb60, Bb61, Bb62, Bb63, Bb64, Bb65, Bb66, Bb67, Bb68, Bb69, Bb70, Bb71, Bb72, Bb73, Bb74, Bb75, Bb76, Bb77, Bb78, Bb79, Bb80, Bb81, Bb82, Bb83, Bb84, Bb85, Bb86, Bb87, Bb88, Bb89, Bb90, Bb91, Bb92, Bb93, Bb94, Bb95, Bb96, Bb97, Bb98, Bb99, Bb100.

Eb Scale

13

Musical staff for the Eb Scale, starting at measure 13. The key signature has three flats (Bb, Eb, Ab) and the time signature is 4/4. The scale is written in bass clef and consists of quarter notes: Eb2, Eb1, Eb2, Eb3, Eb4, Eb5, Eb6, Eb7, Eb8, Eb9, Eb10, Eb11, Eb12, Eb13, Eb14, Eb15, Eb16, Eb17, Eb18, Eb19, Eb20, Eb21, Eb22, Eb23, Eb24, Eb25, Eb26, Eb27, Eb28, Eb29, Eb30, Eb31, Eb32, Eb33, Eb34, Eb35, Eb36, Eb37, Eb38, Eb39, Eb40, Eb41, Eb42, Eb43, Eb44, Eb45, Eb46, Eb47, Eb48, Eb49, Eb50, Eb51, Eb52, Eb53, Eb54, Eb55, Eb56, Eb57, Eb58, Eb59, Eb60, Eb61, Eb62, Eb63, Eb64, Eb65, Eb66, Eb67, Eb68, Eb69, Eb70, Eb71, Eb72, Eb73, Eb74, Eb75, Eb76, Eb77, Eb78, Eb79, Eb80, Eb81, Eb82, Eb83, Eb84, Eb85, Eb86, Eb87, Eb88, Eb89, Eb90, Eb91, Eb92, Eb93, Eb94, Eb95, Eb96, Eb97, Eb98, Eb99, Eb100.

Ab Scale

17

Musical staff for the Ab Scale, starting at measure 17. The key signature has three flats (Bb, Eb, Ab) and the time signature is 4/4. The scale is written in bass clef and consists of quarter notes: Ab2, Ab1, Ab2, Ab3, Ab4, Ab5, Ab6, Ab7, Ab8, Ab9, Ab10, Ab11, Ab12, Ab13, Ab14, Ab15, Ab16, Ab17, Ab18, Ab19, Ab20, Ab21, Ab22, Ab23, Ab24, Ab25, Ab26, Ab27, Ab28, Ab29, Ab30, Ab31, Ab32, Ab33, Ab34, Ab35, Ab36, Ab37, Ab38, Ab39, Ab40, Ab41, Ab42, Ab43, Ab44, Ab45, Ab46, Ab47, Ab48, Ab49, Ab50, Ab51, Ab52, Ab53, Ab54, Ab55, Ab56, Ab57, Ab58, Ab59, Ab60, Ab61, Ab62, Ab63, Ab64, Ab65, Ab66, Ab67, Ab68, Ab69, Ab70, Ab71, Ab72, Ab73, Ab74, Ab75, Ab76, Ab77, Ab78, Ab79, Ab80, Ab81, Ab82, Ab83, Ab84, Ab85, Ab86, Ab87, Ab88, Ab89, Ab90, Ab91, Ab92, Ab93, Ab94, Ab95, Ab96, Ab97, Ab98, Ab99, Ab100.

Db Scale

21

Musical staff for the Db Scale, starting at measure 21. The key signature has four flats (Bb, Eb, Ab, Db) and the time signature is 4/4. The scale is written in bass clef and consists of quarter notes: Db2, Db1, Db2, Db3, Db4, Db5, Db6, Db7, Db8, Db9, Db10, Db11, Db12, Db13, Db14, Db15, Db16, Db17, Db18, Db19, Db20, Db21, Db22, Db23, Db24, Db25, Db26, Db27, Db28, Db29, Db30, Db31, Db32, Db33, Db34, Db35, Db36, Db37, Db38, Db39, Db40, Db41, Db42, Db43, Db44, Db45, Db46, Db47, Db48, Db49, Db50, Db51, Db52, Db53, Db54, Db55, Db56, Db57, Db58, Db59, Db60, Db61, Db62, Db63, Db64, Db65, Db66, Db67, Db68, Db69, Db70, Db71, Db72, Db73, Db74, Db75, Db76, Db77, Db78, Db79, Db80, Db81, Db82, Db83, Db84, Db85, Db86, Db87, Db88, Db89, Db90, Db91, Db92, Db93, Db94, Db95, Db96, Db97, Db98, Db99, Db100.

Chromatic Scale

25

Musical staff for the Chromatic Scale, starting at measure 25. The key signature has four flats (Bb, Eb, Ab, Db) and the time signature is 4/4. The scale is written in bass clef and consists of quarter notes: Db2, Db1, Db2, Db3, Db4, Db5, Db6, Db7, Db8, Db9, Db10, Db11, Db12, Db13, Db14, Db15, Db16, Db17, Db18, Db19, Db20, Db21, Db22, Db23, Db24, Db25, Db26, Db27, Db28, Db29, Db30, Db31, Db32, Db33, Db34, Db35, Db36, Db37, Db38, Db39, Db40, Db41, Db42, Db43, Db44, Db45, Db46, Db47, Db48, Db49, Db50, Db51, Db52, Db53, Db54, Db55, Db56, Db57, Db58, Db59, Db60, Db61, Db62, Db63, Db64, Db65, Db66, Db67, Db68, Db69, Db70, Db71, Db72, Db73, Db74, Db75, Db76, Db77, Db78, Db79, Db80, Db81, Db82, Db83, Db84, Db85, Db86, Db87, Db88, Db89, Db90, Db91, Db92, Db93, Db94, Db95, Db96, Db97, Db98, Db99, Db100.

29

Musical staff for the Chromatic Scale continuation, starting at measure 29. The key signature has four flats (Bb, Eb, Ab, Db) and the time signature is 4/4. The scale is written in bass clef and consists of quarter notes: Db2, Db1, Db2, Db3, Db4, Db5, Db6, Db7, Db8, Db9, Db10, Db11, Db12, Db13, Db14, Db15, Db16, Db17, Db18, Db19, Db20, Db21, Db22, Db23, Db24, Db25, Db26, Db27, Db28, Db29, Db30, Db31, Db32, Db33, Db34, Db35, Db36, Db37, Db38, Db39, Db40, Db41, Db42, Db43, Db44, Db45, Db46, Db47, Db48, Db49, Db50, Db51, Db52, Db53, Db54, Db55, Db56, Db57, Db58, Db59, Db60, Db61, Db62, Db63, Db64, Db65, Db66, Db67, Db68, Db69, Db70, Db71, Db72, Db73, Db74, Db75, Db76, Db77, Db78, Db79, Db80, Db81, Db82, Db83, Db84, Db85, Db86, Db87, Db88, Db89, Db90, Db91, Db92, Db93, Db94, Db95, Db96, Db97, Db98, Db99, Db100.

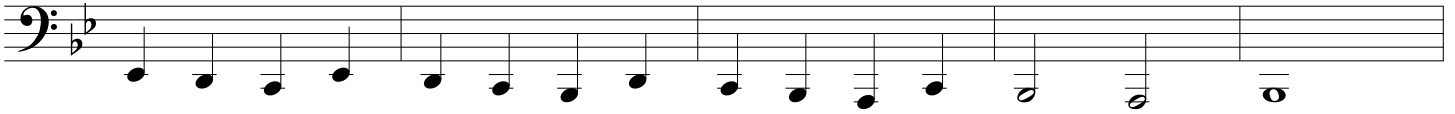
Symphonic Band Audition

Scale Pattern #1 in Bb

32

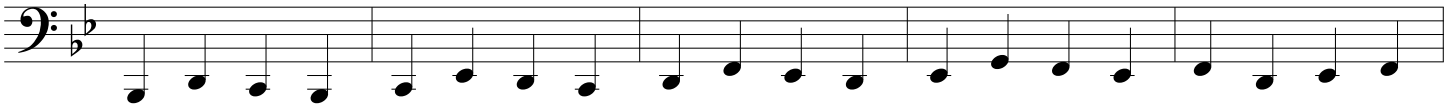


37

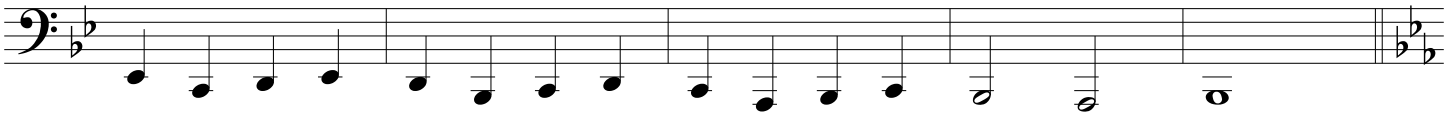


Scale Pattern #2 in Bb

42



47



Scale Pattern #1 in Eb

52



57



Scale Pattern #2 in Eb

62



67



Two Octave Scale

72



Daydream

♩ = 100

77

mp

mf

85

93

f

101

mf

109

117

This solo must be played WITH accompaniment. To find the accompaniment, go to the band website, www.vhbandrocks.com, click on the "Auditions" link on the right hand side. Links to the piano recordings will be on that page.

There are two recordings. One has the piano part AND the solo. The other has just the piano. The first is for your practice. The second is what to have playing while you record.

If you have any questions, please contact Mr. Lemen.